

technical plastic: PE 300 (Polyethylen)

application

Manufacture of tanks and construction parts in chemical and apparatus engineering

properties

PE 300 has a high chemical resistance and is therefore ideal for use in contact with many acids, alkalis and solvents.

storage

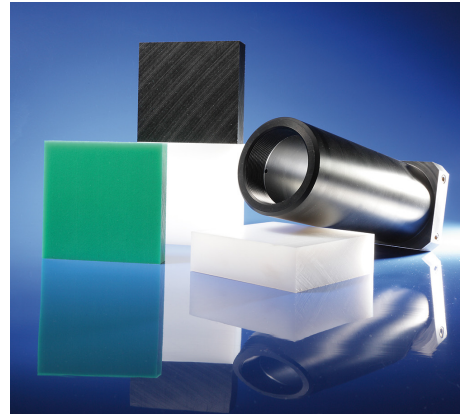
Dry in the plus range | Panels can cause flatness problems due to internal stresses.

processing

High cutting speed | low feed rate | observe good chip evacuation!

product range

We offer PE 300 as semi-finished products in various dimensions and thicknesses as sheets and solid rods.



| properties | values | |
|---|---|---|
| quality | PE 300 (PE-HD) | |
| colour | natur | black |
| hardness (Shore D) DIN EN ISO 868 (15 s) | 65 | 65 |
| gravity (g/cm ³) DIN EN ISO 1183 | 0,95 | 0,96 |
| tensile modulus of elasticity (MPa) DIN EN ISO 527 | 1100 | 1100 |
| tension at yield (MPa) DIN EN ISO 527 | 23 | 23 |
| elongation at yield stress (%) DIN EN ISO 527 | 9 | 9 |
| notch impact strength Charpy (kJ/m ²) DIN EN ISO 179-1eA | 16 | 16 |
| spec. surface resistance (Ohm) DIN IEC 60093 | ≥ 10 ¹³ | ≥ 10 ¹³ |
| fire behaviour DIN 4102 | B2 normal flammability (self-assessment without test certificate) | B2 normal flammability (self-assessment without test certificate) |
| mean coefficient of linear thermal expansion (K ⁻¹) ISO 11359-2 | 1,8 x 10 ⁻⁴ | 1,8 x 10 ⁻⁴ |
| thermal conductivity (W/m * K) DIN EN 12667 | 0,38 | 0,38 |
| temperature range (C°) | -50 ~ +80 | -50 ~ +80 |
| conformities | | |
| | EC 10/2011 FDA 21 cfr 177.1520 | EC 10/2011 |



Hinweis: Die technischen Kennwerte sind lediglich eine Planungshilfe. Insbesondere stellen sie keine zugesicherten Eigenschaften dar. Die Informationen im Datenblatt beruhen auf Einzelmessungen und unseren derzeitigen Kenntnissen und Erfahrungen. Produktionsbedingte Änderungen vorbehalten.
Wir weisen darauf hin, dass die individuellen Einsatzbedingungen Einfluss auf die Eigenschaften jedes einzelnen Produktes nehmen. Aus diesem Grund ist der Kunde verpflichtet, die Materialien einer Eignungsprüfung zu unterziehen. Der Einsatz unserer Materialien erfolgt ausschließlich im Verantwortungsbereich des Anwenders.

We point out that all information within this catalogue must be considered as rough guidelines. All information provided does not describe any warranted characteristics of materials. The information in this catalogue is based upon individual measurements representing our best knowledge as of the day of measurement. They are subject to technical modifications. We point out that the specific operation conditions may influence the properties of each individual product. For this reason, the customer is required to perform an aptitude test of the materials. The use of our materials is the sole responsibility of the user.

Please note that only the German version of this catalogue is binding in any case. Legal claims can only be based upon the German version. We admit no liability for this English version since it is for explanatory purposes only.